



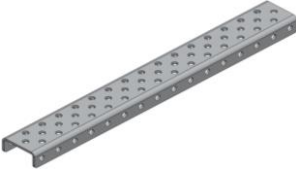
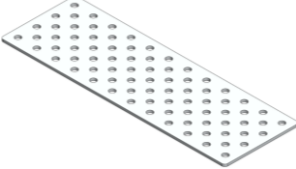
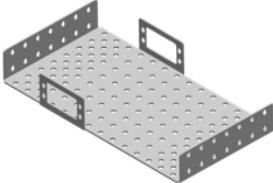


Description	Picture	# in 2020 Kit
<b>KIPR Metal</b>		
Strap 1 x 19		4
Strap 1 x 10		6
Channel 3 x 8		2
Channel 3 x 12		2
Channel 3 x 16		1
Plate 4 x 12		2
Chassis		1

Create2 Bracket Set



1 Set (2 different pieces)

D Bracket



1

Angle Bracket



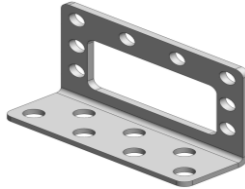
2

Plus Bracket



1

Servo Bracket



4

Round Servo Horn



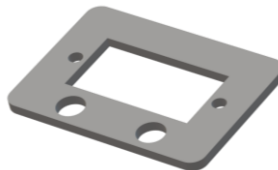
2

1 x 5 Servo Horn



2

Micro Servo Mount



2

## Screws, Nuts, and Standoffs

---

Screw 8-32 x 1/4" (black)		20
Screw 8-32 x 1/2" (black)		45
Screw 8-32 x 3/4" (black)		35
IGUS Screw M3 x 14mm (silver)		10
Nut 8-32 Keeps (black)		85
Nut 8-32 Nylock (black)		15
IGUS Nut M3 (silver)		8
Standoff 8-32 x 1/2"		12
Standoff 8-32 x 1"		7
Standoff 8-32 x 2"		2
Standoff 8-32 x 3"		1

Create Bracket  
Mounting Screws  
(packaged with  
create brackets)



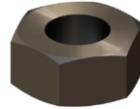
6

Short Silver Servo  
Horn Screw (M3)



3

Silver Servo Horn  
Nut (M3)



5

Silver Servo Horn  
Machine Screw (M3)



7

Threaded Rod  
8-32 x 1"



10

Threaded Rod  
8-32 x 2"



2

Threaded Rod  
8-32 x 3"



2

Threaded Rod  
8-32 x 6"



1

## MISC.

---

Caster



1

Screwdriver



1